

Pike County Housing Authority

The office will be closed from Wednesday April 11 to Thursday April 12. The office staff and some of the maintenance will be at a conference in Decatur. We apologize for the inconvenience. We will be open on Friday April 13 at our regular hours.

During the week of May 21-May 25, HUD Representatives from the Chicago Field Office will be on hand to do a site visit. It is not known what units, if any, they will want to enter. Please consider this your formal notice that they may want to enter your unit during that time frame.

Important Dates

April 1st-Easter and
April Fool's Day.

April 22nd-Earth Day

Any account that is a minimum of 2 months behind will receive a pre-eviction notice. If you do not get caught up or do not do a repayment agreement within 30 days of this notice you will receive a 14 day notice.

Please update your address and phone number with the office with your current information. We must be able to get information to you by mail or phone.

APRIL 2018

	MON	TUE	WED	THU	FRI	SAT	SUN
13							1 April Fool's Day Easter
14	2 92/273	3 93/272	4 94/271	5 95/270	6 Close at 2pm meeting	7 97/268	8 98/267
15	9 99/266	10 100/265	11 Office closed	12 Office closed	13 103/262	14 104/261	15 105/260
16	16 106/259	17 107/258	18 108/257	19 109/256	20 PCHA Board Meeting 3pm	21 111/254	22 Earth Day
17	23 113/252	24 114/251	25 115/250	26 116/249	27 Close at 2pm for meeting	28 118/247	29 119/246
18	30 120/245						

*The answer to the March puzzle was
watermelon*

Do not walk across the field behind Landess Terrace. The owner of the field has a crop planted there. Please walk around the edges of the field until the end of May.

We are having some trouble at the community building in Barry in the laundry room. **DO NOT** leave laundry unattended, if it is left overnight and found by someone it will be placed in trash bags and left next to the trash container at the back door and if not claimed by the next day it will be placed in the container. **DO NOT** overload the machines and **DO NOT** use both machines at the same time.

You are not allowed to have anyone permanently living with you without previous approval. Guests may stay for 2 weeks every 6 months. Someone who has been evicted from another unit is not allowed to move in with another tenant. Someone evicted from one housing authority would not be allowed into another until the outstanding balance is paid in full.

Please report any income changes within 10 days of the change. This is required according to your lease.

**GRIGGSVILLE
RESIDENTS**

There is to be no
burning in the
ditch!!

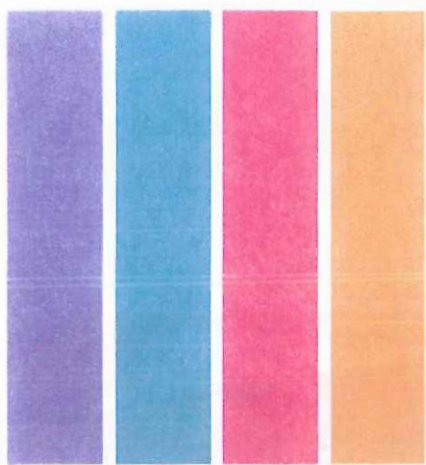
BE AWARE

For those that don't follow housing at the Federal level, they are proposing **DRASTIC** cuts to funding the operating subsidies and capital funds. These monies are **CRITICAL** to the survival of housing authorities.

To offset these cuts they are proposing changes to rent structuring. This means the money that we do not receive from the Federal Government we will start to collect from our clients.

THIS HAS NOTHING TO DO WITH PIKE COUNTY HOUSING AUTHORITY. If you object to these things call your Senators and Representatives and voice your concerns to them.

DO NOT BLAME US IF THIS HAPPENS!!!



4th Annual Pike County Crazy 8

Registration

Individual \$20

Family (up to 4) \$55

Kid's Fun Run \$10

**prices increase after 4/3*

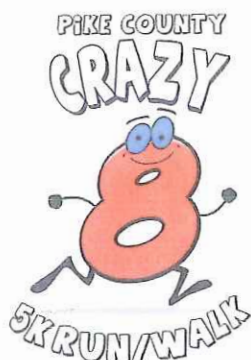
Register online at
quincymedgroup.com,
at any Pike County
QMG Location, or the
morning of the event.

Shirt sizes are only
guaranteed for registrations
received by 4/2. The Kid's Fun
Run includes a t-shirt.

5K

Run & Walk Kid's Fun Run

**All proceeds benefit the Pikeland Snack Pack Program
and the Griggsville-Perry Snack Pack Program**



**Saturday
April 14, 2018
8:00 a.m.**

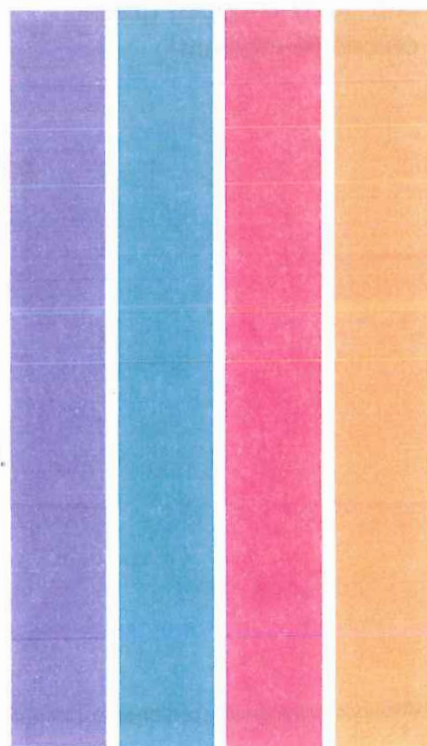
**Pittsfield QMG Clinic
320 N. Madison**

Registration and packet pick-up begins at 7:00 a.m.
5K begins at 8:00 a.m. • Kid's Fun Run begins at 8:45 a.m.



QUINCY MEDICAL GROUP
Healthcare Foundation

www.quincymedgroup.com





Bacon-Cheese Pull-Aparts



Prep	Total	Ingredients	Servings
15 MIN	45 MIN	6	8



Ingredients

- 1 egg
- 2 tablespoons milk
- 1 can (16.3 oz) Pillsbury™ Grands!™ Flaky Layers refrigerated Original biscuits
- 1 (2.1-oz.) pkg. precooked bacon, cut into 1/2-inch pieces
- 3 oz. (3/4 cup) shredded Cheddar cheese
- 1/4 cup finely chopped green onions (4 medium)

Steps

- 1 Heat oven to 350°F. Spray 11x7- or 12x8-inch (2-quart) glass baking dish with cooking spray. In large bowl, beat egg and milk with wire whisk until smooth.
- 2 Separate dough into 8 biscuits; cut each into quarters. Gently stir biscuit pieces into egg mixture to coat evenly. Fold in bacon, cheese and onions. Spoon mixture into sprayed dish; arrange biscuit pieces in single layer.
- 3 Bake at 350°F. for 23 to 28 minutes or until golden brown. Cut into squares.

© 2018 ®/TM General Mills All Rights Reserved

**Answer correctly and you will receive a
\$25.00 credit on your account**

**Paul's height is six feet,
he's an assistant at a
butcher's shop, and he
wears size 9 shoes.
What does he weigh?**

One call per tenant per day, please!!

We have been having trouble with the kitchen area of the community building in Barry. Due to this trouble we will no longer have a stove or refrigerator in this building. The building is still available for rent however, you will have to bring coolers for the items you would have put in the fridge. We apologize for the inconvenience.

Pittsfield Residents

Reminder that clean-up days are April 21st through April 28th. We are going to try and make the trailers available during that time for large items.

Just a reminder, the security deposit amount is only changing once. Everyone is going to be paying the same amount. It is a fixed amount of \$300.00. It will not be changed every year.

Pike County Housing Authority

838 Mason St.

P.O. Box 123

Barry, IL 62312

Phone: 217-407-0707

Fax: 217-407-0708

www.pikehousing.com

Office hours

8-5 Monday through Friday

Closed 12-1 for lunch



Barry Residents

Just a reminder that the city wide clean-up is April 14 through April 22. We will try to make the trailers available during this time for larger items.