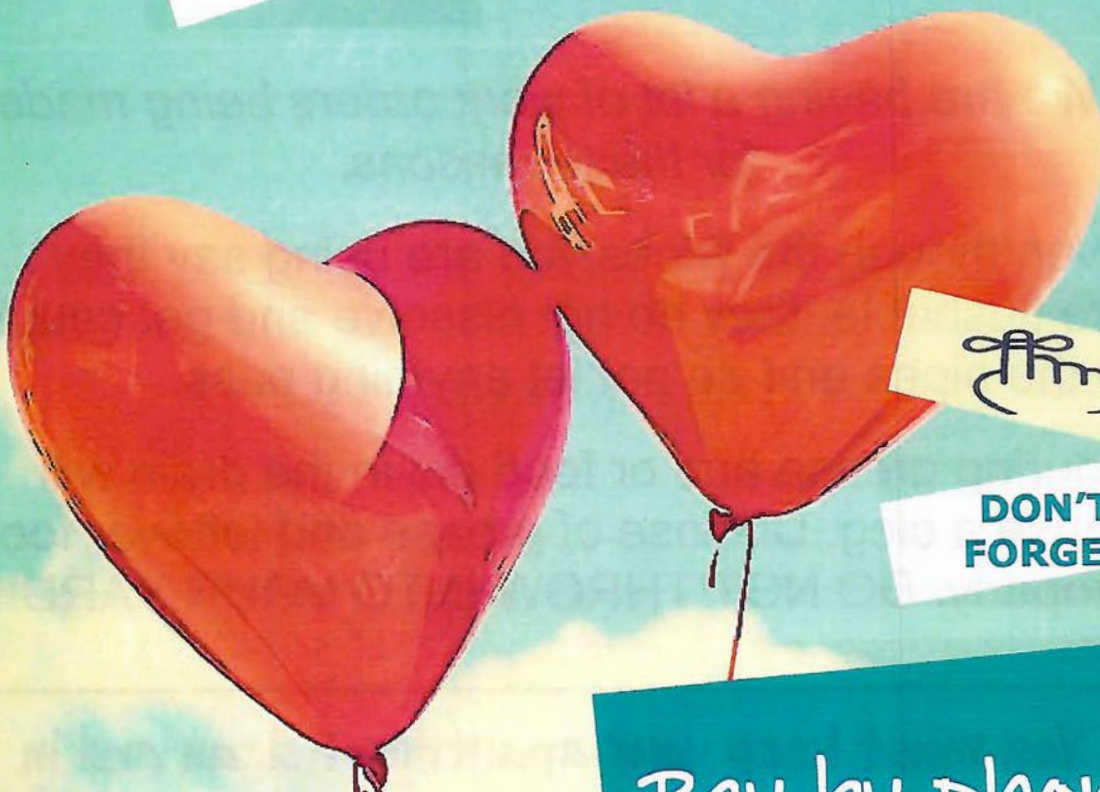


PIKE COUNTY HOUSING AUTHORITY

February 2022

NEWS

LETTER



DON'T
FORGET

*New rent due
date is the 25th
of each month*

Pay by phone

\$3.00 service fee added

Please do not....



Flush any wipes in toilet

Pour grease down sink

Put food down the drain

We are having a lot of work orders being made for these reasons.

Even though the wipes you are using say they are flushable, they do not dissolve and get caught in the pipes and do not let anything pass.

Pouring grease and or food down the drain will cause a clog. Dispose of grease and leftover food properly. **DO NOT THROW INTO YOUR YARD!!**

You must keep your apartment clean and in good order. This includes the outside area as well. If maintenance or the pest control report to us that your unit is not clean, we will schedule an inspection.

Formal Repayment Agreements

We offer repayment agreements to tenants who have fallen behind on their rent. This agreement requires a 25% deposit down of the past due amount. The total of the past due amount minus the 25% deposit is the amount of the formal repayment agreement.

PCHA policy states that if a family is paying less than 40% of its monthly adjusted income (MAI) in rent, the minimum monthly repayment amount will be the greater of the following two amounts;

- The difference between 40% of the family's MAI and the TTP at the time the agreement is executed
- \$25.00

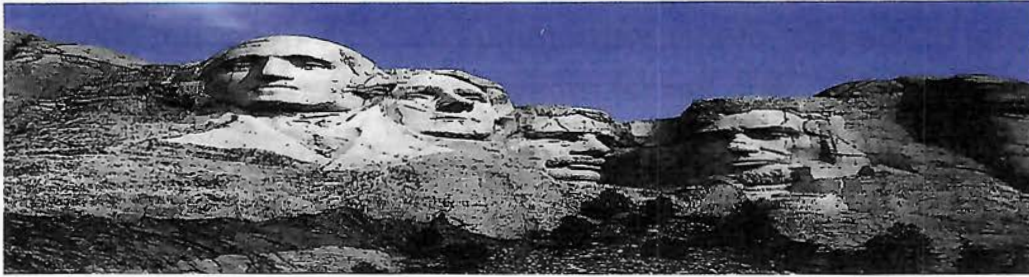
If you are more than 60 days past due on your rent, you will be receiving a letter from PCHA with the repayment agreement for your individual account. If you decide to take part in the repayment agreement, 25% of the past due amount is due with the signed and dated repayment agreement form. If we do not receive any correspondence from you, your account will be delinquent and eligible for eviction process.



Resident Board Member Needed

If you are interested in becoming a resident board member, please call the office at 217-407-0707.

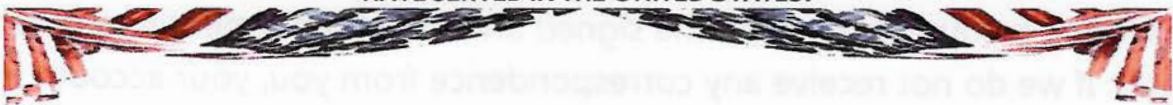
PRESIDENTS' DAY



PRESIDENTS' DAY FOR THE YEAR 2022 IS CELEBRATED/OBSERVED
ON MONDAY, FEBRUARY 21ST.

PRESIDENTS' DAY, ALSO KNOWN AS WASHINGTON'S BIRTHDAY,
IS ON THE THIRD MONDAY OF FEBRUARY
EACH YEAR AND IS A FEDERAL HOLIDAY IN THE UNITED STATES.

THE DAY NOT ONLY HONORS GEORGE WASHINGTON
(BORN FEBRUARY 22), THE FIRST PRESIDENT OF THE UNITED STATES AND ABRAHAM LINCOLN (BORN
FEBRUARY 12TH) WHOSE BIRTHDAYS ARE BOTH IN FEBRUARY, BUT HONORS ALL THE PRESIDENTS WHO
HAVE SERVED IN THE UNITED STATES.



RENTAL ASSISTANCE

RENTAL ASSISTANCE TO ILLINOIS RESIDENTS THROUGH DIRECT PAYMENT TO LANDLORDS
MAY BE AVAILABLE FOR UP TO 12 MONTHS OF PAST DUE RENT AND 3 MONTHS OF FUTURE
RENT. ASSISTANCE MAY ALSO BE AVAILABLE FOR PAST-DUE UTILITY BILLS THAT WILL BE
ISSUED DIRECTLY TO THE SERVICE PROVIDER.

IF YOU ARE IN NEED OF RENTAL ASSISTANCE OR UTILITY ASSISTANCE YOU MAY CONTACT:

STEPHANIE POINTER
312-405-2979

LATANYA LAW
733-394-1050

STEPHANIE.POINTER@ILLINOIS.GOV

LATANYA.LAW2@ILLINOIS.GOV

ASSISTANCE MAY BE REQUESTED ONCE YOU HAVE FALLEN BEHIND ON RENT OR BELIEVE YOU
WILL FALL BEHIND, BEFORE AN EVICTION CASE IS FILED.



EMERGENCY PREPAREDNESS

Be Prepared:

Unexpected emergencies are just that-unexpected. They can happen quickly, without much warning, or develop over months. Recent events like COVID-19 have encouraged all of us to take a closer look at emergency preparedness. What steps can we take to be prepared?

WHY PLAN NOW?

Planning ahead makes sense: having your bases covered reduces anxiety and lessens the risk of overlooking something important. Clear communication ensures that in the case of an emergency, you and your family know what to do.

What Should I Do?

Start with the basics. Update your emergency contact list. Include your family, healthcare providers, and other important numbers. Keep a copy in your wallet and have one near your phone. Keep copies of important documents in a fire-safe box in your home or in a safety deposit box at your bank. Update your list of medications. If possible, consider getting on a three-month fill in case you are unable to leave home or have medicines delivered for a short while. Know the safe places within your home in case you need to shelter in place during a severe weather emergency. Plan for transportation and/or a place to stay if you need to evacuate. If you use medical equipment like a wheelchair or walker, make sure it's in good repair and label it with your name and contact information (pre-printed mailing labels work well). Don't forget your furry friends: If you would need to leave your home, identify someone who could care for your pets and plan for their care.

What Do I Need?

After you've completed your plan, consider pulling together some essential supplies. Your "Emergency Kit" may include extra batteries for flashlights, hearing aids, and portable radio; a small first-aid kit; several days' worth of non-perishable food (canned, dried, or shelf-stable microwaveable meals); hygiene supplies; and pet supplies. Be sure to check your Emergency Kit every six months and remove any expired items.

When an Emergency Happens:

Remember that everyone in a community is impacted by an emergency or disaster. First responders and relief organizations will do everything they can to help, but it will take time. Having your emergency plan in place before an emergency happens will let you focus on taking care of yourself. It's much easier to remain calm when you know what to do. Take responsibility by planning now.



Reminders...



NATIONAL
GAMBLING
HOTLINE

800-522-4700

ILLINOIS
TOBACCO
QUITLINE

1-866-QUIT-YES

1-866-784-8937

PET CARE

You must continue to pick up outside after your pets in your yard during winter. We have had several complaints that this is not being done. If you do not pick up after your animal, you will be asked to remove it from your home.

Do not throw garbage into your yard!! Animals will be drawn to it and eat it.

Keep your dog on a tie up when it is let outside. Dogs cannot be let loose to run on PCHA property. This presents a risk of the animal attacking someone, or someone mistreating the animal. If you need a copy of our pet policy, please call the office.

If you need a pet sticker for your screen door, please call the office.

GUESTS

If you plan to have a guest longer than 3 days, please call the office. The guest policy has been revised. Resident guest are allowed to stay 14 consecutive days; not to exceed 30 per calendar year.

CALLING THE OFFICE

When calling the office and you do not reach someone, please leave a message. If we do not answer your call, we are on the phone with someone else. At times these calls maybe lengthy and may include more than one employee. We will answer your call as soon as we can.



HAPPENING IN PIKE COUNTY

RECYCLING

OPEN AT THE AREA
(WWW) OFFICE IN
PITTSFIELD AT 1335
W. WASHINGTON
ST. HOURS ARE
8:00AM-4:00PM.
THE DUMPSTERS
ARE ON THE **EAST**
SIDE OF THE
BUILDING.

THE THIRD SATURDAYS OF THE MONTH

The Crossing Church food bank open
9:00am-11:00am
at the Crossing Thrift Store

Calvary Baptist Church
Cleaning supplies for Pike County
residents 9:00am-11:00am

Good Samaritan Closet
Is open 9:00am-11:00am

Free clothes to all

For information or to donate

Call 217-491-8981

BINGO WEDNESDAYS

PITTSFIELD SENIOR CENTER
AFTER LUNCH & AS REQUESTED



CHANGES IN HOUSEHOLD

If your household changes, meaning individuals who are listed on the lease, including minors, are no longer living at the apartment, you need to contact PCHA as soon as possible. We will require documents proving the individual(s) are living elsewhere. Once that is received you will need to schedule an appointment to come in and sign a new paperwork packet, including a new lease. If you have a child who is turning or has turned 18, you need to contact PCHA to sign a new paperwork packet, including a new lease. If a new paperwork packet is needed, all members of the household who are 18 and over, will need to be present to sign the documents. These signings will be by appointment only.



**NO
SMOKING**

Thank You

In the event that maintenance or pest control report to our office that you are smoking in your unit, we will schedule an inspection. If it is proven you have been smoking in the unit, you will receive an infraction against your lease. If you get 3 smoking infractions you will be eligible for eviction.

This is non-negotiable.

Every tenant (over 18) has signed the
No Smoking lease addendum.

RENT IS DUE EVERY MONTH!

**YOU NEED TO MAIL IT, DROP IT OFF AT OUR OFFICE IN
THE SECURE DROP BOX, PAY ONLINE WITH OUR WEBSITE,
OR CALL US TO PAY OVER THE PHONE.**

**IT DOESN'T MATTER HOW MUCH YOUR RENT IS, IT NEEDS
TO BE PAID EVERY MONTH BY THE 25TH. AFTER THE 25TH A \$25.00 LATE FEE WILL BE
APPLIED TO YOUR ACCOUNT.**



**ALL POLICY UPDATES IN THE JANUARY
NEWSLETTER WILL TAKE EFFECT 04/01/2022**

PUZZLE : WHATS YOUR FLAVOR?? JELLYBEANS

G R X Y N B P P A V H X Y O E N L E
R L A Z D L A O I S M F G N C O E K
E H G E O N I N P N X T K I I M M A
E L K R P B A V A C E P B C R A O C
N I A T O Y F C A N O A W C O N N E
A I D V D C C D N D A R P U C N D S
P U B I H G O I Y O A B N P I I R E
P A J E A S H N U L T L C P L C O E
L L R U M F O C M J W T O A S E P H
E R Y A R O O T B E E R O C G H E C
Y Z E T A N A R G E M O P C A N F W
Y R R E B K C A L B Y G C T I N Q F
C M A R S H M A L L O W P R Q J I B
M U G E L B B U B C V K E A B L H P
M A N G O W F M S O U G S U E L W D
W A T E R M E L O N N E F Y J L K E
A T I R A G R A M A J Q O G P N A D
N Z G U C P L S T O T X T J M V U L

BANANA

CAPPUCCINO

CINNAMON

GREEN APPLE

LICORICE

MARSHMALLOW

POMEGRANATE

TANGERINE

BLACKBERRY

CHEESECAKE

COTTON CANDY

JUICY PEAR

MANGO

PINACOLADA

POPCORN

WATERMELON

BUBBLE GUM

CHERRY

CREAM SODA

LEMON DROP

MARGARITA

PINEAPPLE

ROOT BEER